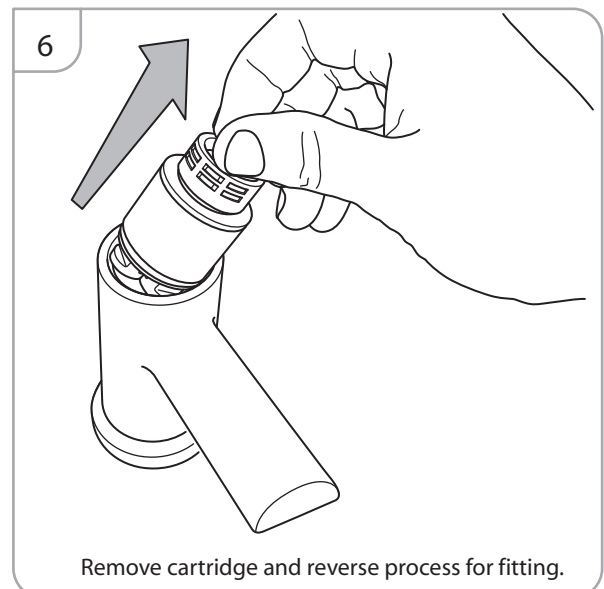
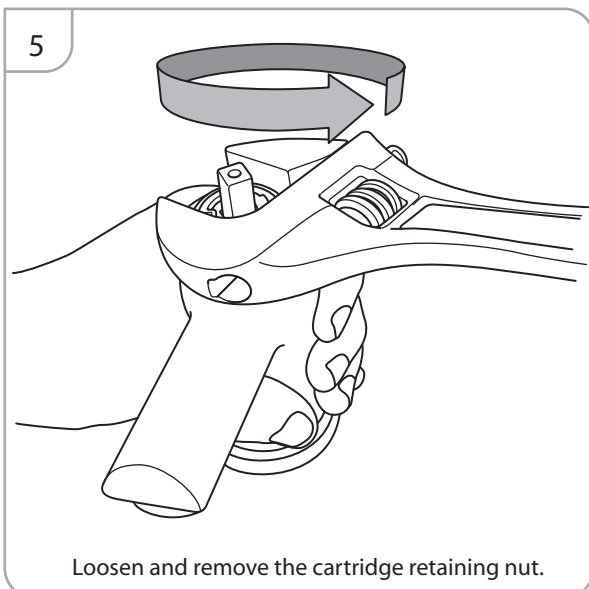
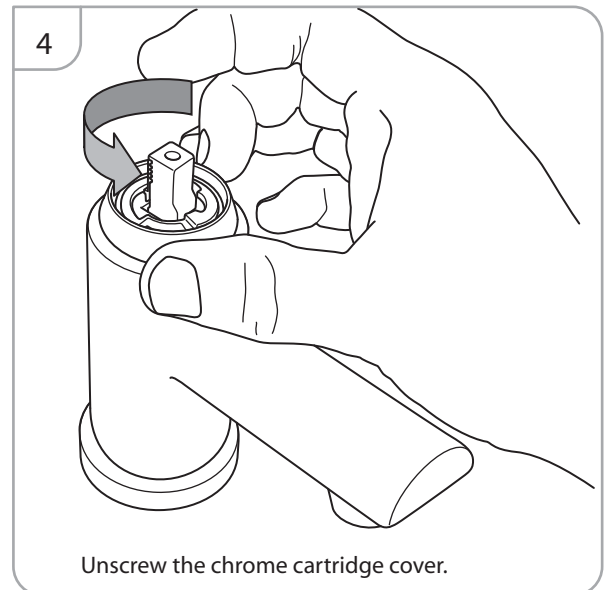
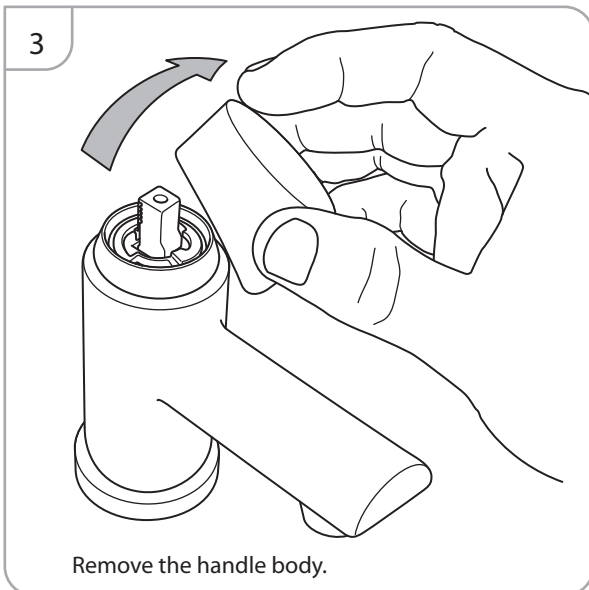
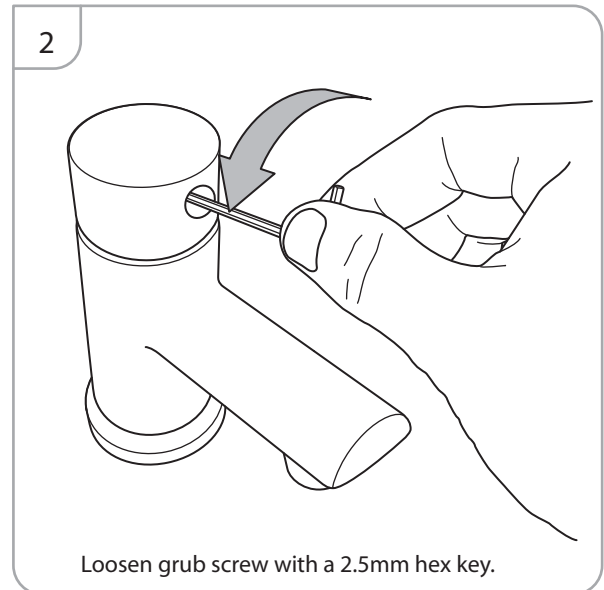
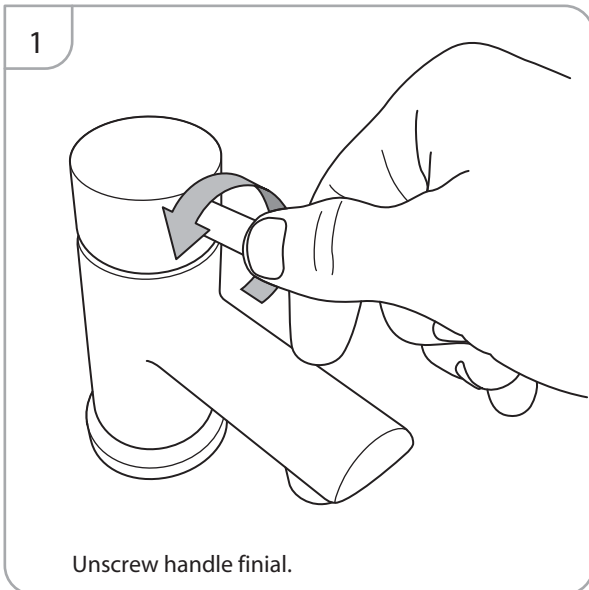


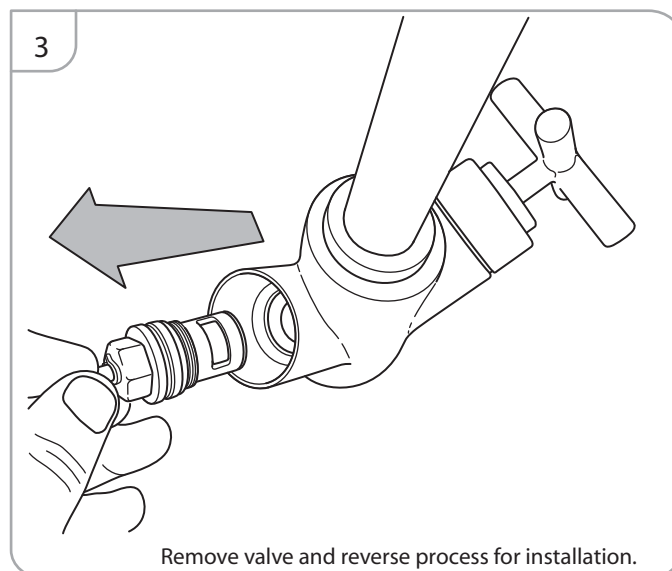
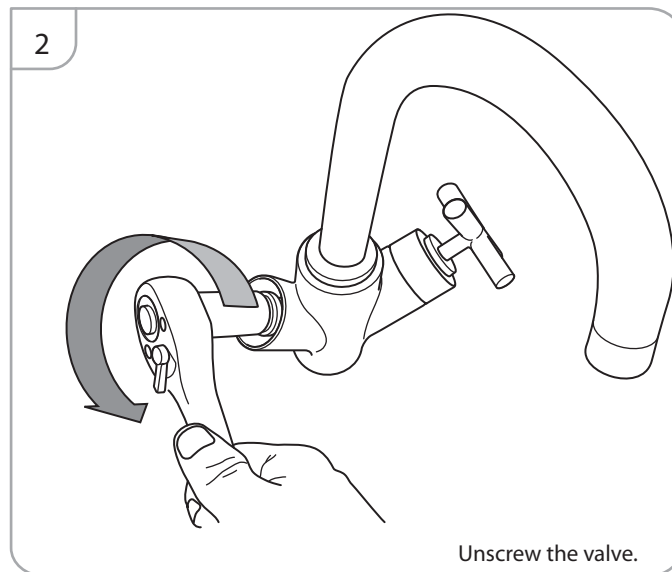
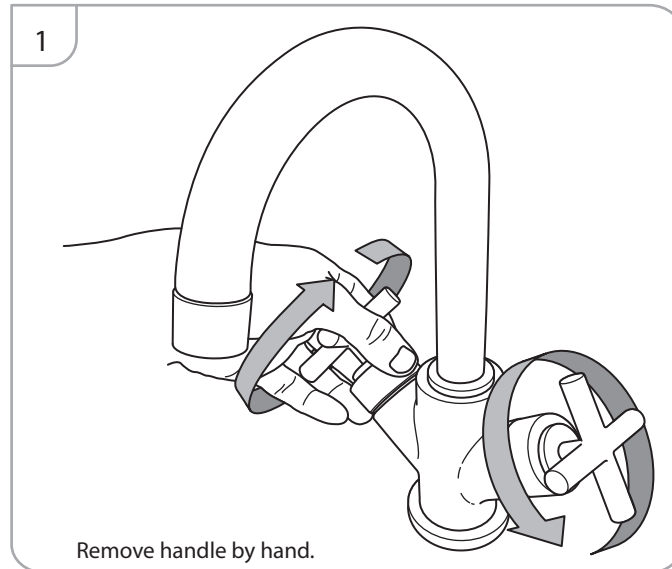
Instructions for the removal of a tap cartridge	Page 2
Instructions for the removal of a tap valve - Basin Mixer	Page 3
Instructions for the removal of a tap valve - Bath Filler / Shower Mixer	Page 4
Instructions for pop up waste replacement	Page 5
Instructions for bath/shower mixer diverter replacement	Page 7
Instructions for Storm bath/shower mixer diverter replacement	Page 8
Instructions for fixing drip issue on Reef, Bora & Aero basin mixers	Page 11



AFTERCARE

Instructions for the removal of tap valve
Basin mixer

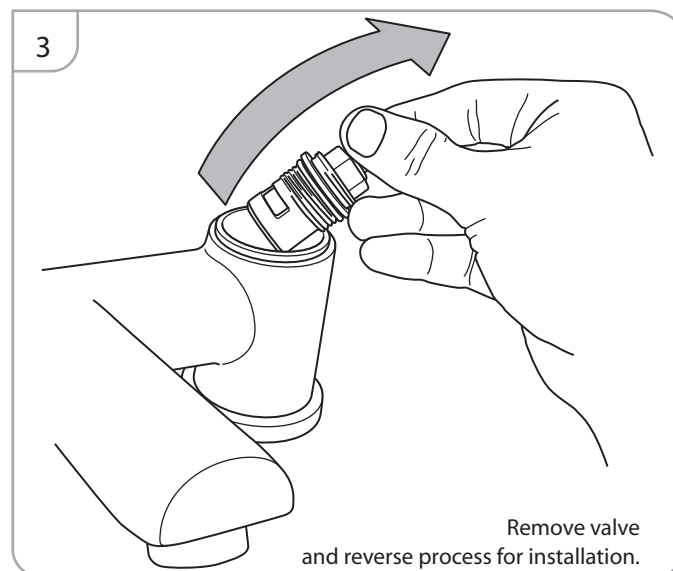
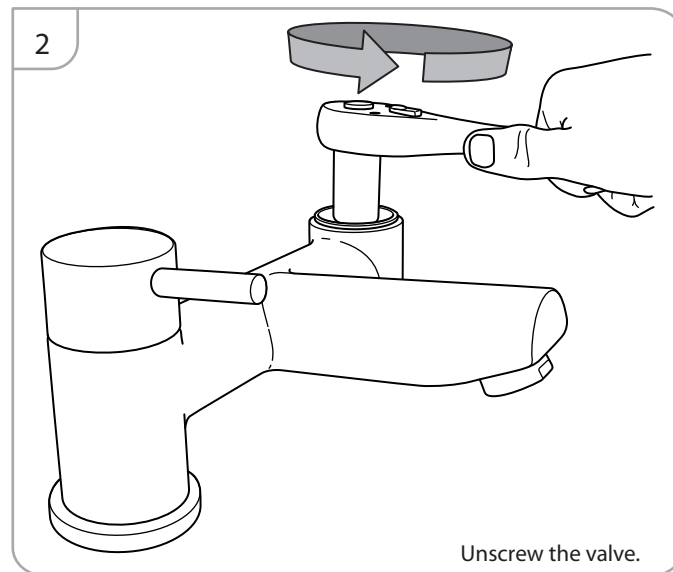
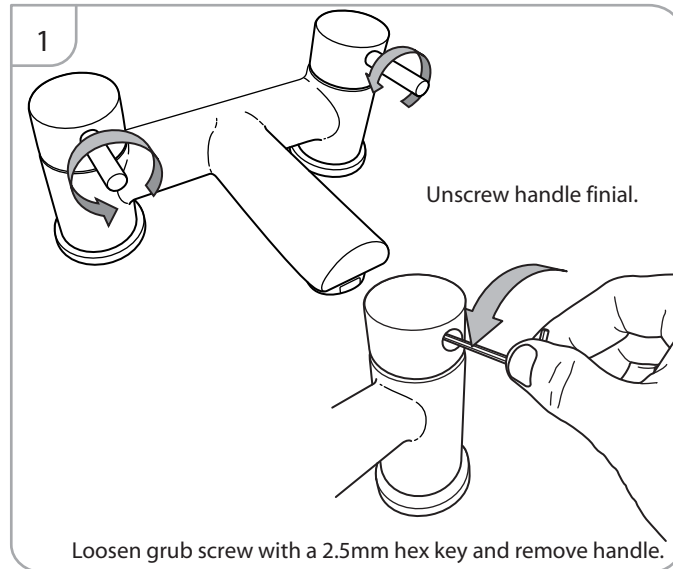
Before beginning any work ensure that the water supply is turned off



AFTERCARE

Instructions for the removal of tap valve
Bath filler / shower mixer

Before beginning any work ensure that the water supply is turned off



POP-UP WASTE - mechanism replacement instructions

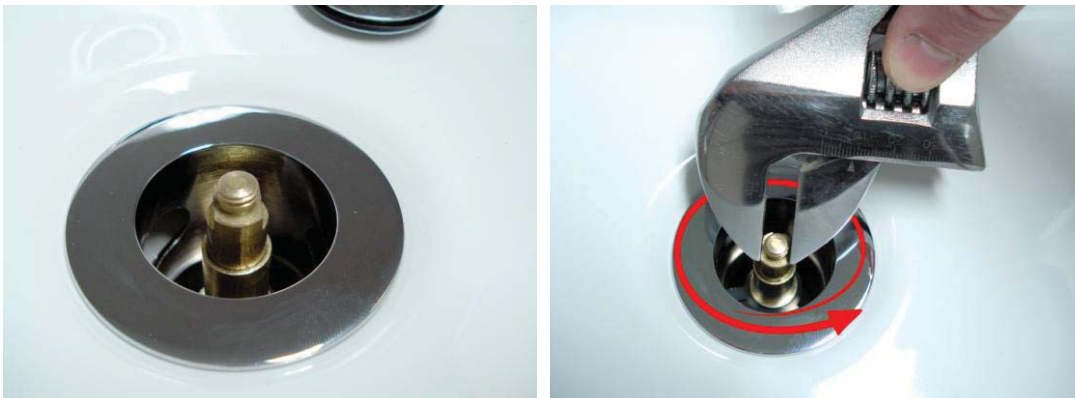


STEP 1



Unscrew the plug top by rotating anti-clockwise

STEP 2



With the plug top removed you can access the brass pop-up mechanism. This can be unscrewed and removed by rotating anti-clockwise. Use a 9mm / adjustable spanner to grip the mechanism across the flats and rotate anti-clockwise.

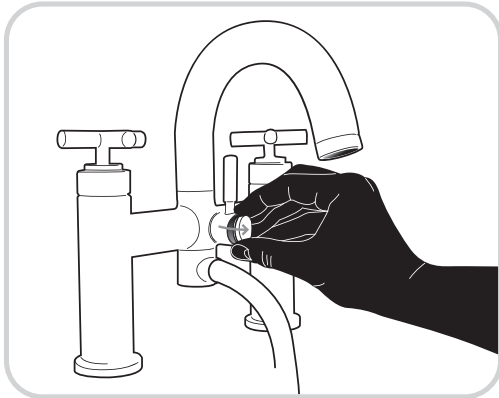
STEP 3



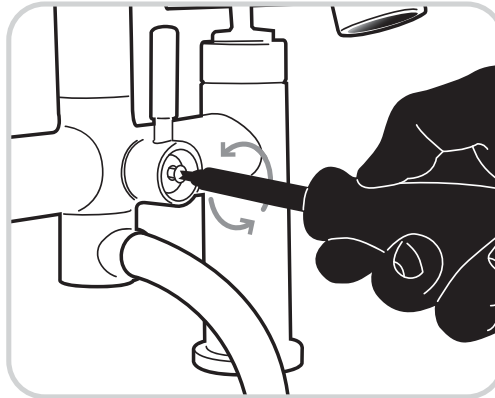
Replace the faulty mechanism reversing the above steps to fit it.

AFTERCARE

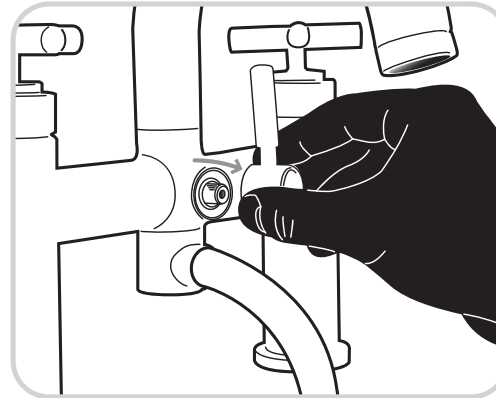
Instructions for bath/shower mixer diverter replacement



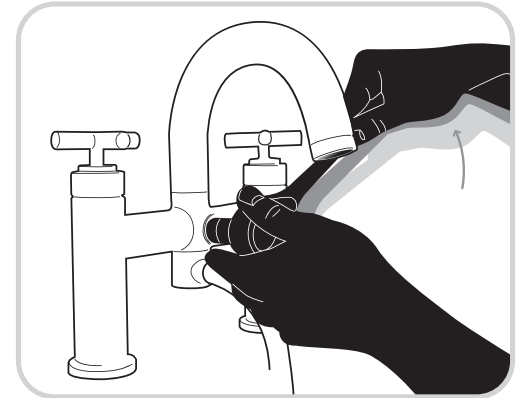
1. Remove the face plate on the diverter handle.



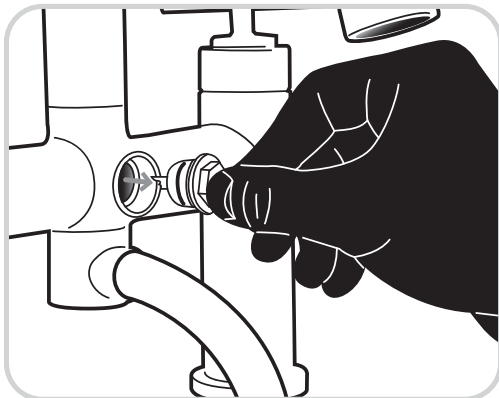
2. Using a Phillips head screwdriver remove the screw and washers on the inside of the diverter handle.



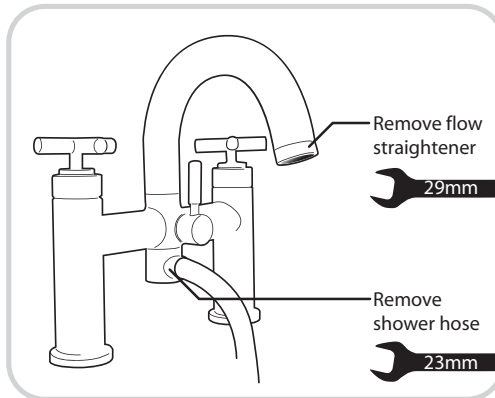
3. Remove the diverter handle.



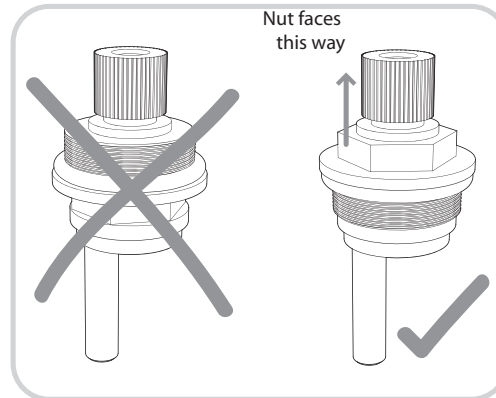
4. Using a 14mm socket and wrench unscrew the diverter axle.



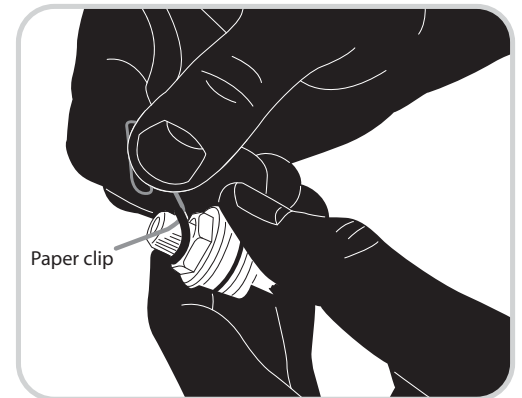
5. Remove the damaged diverter axle.



6. Check for any loose debris inside the diverter body and remove it. If none is visible you should flush out the mixer by removing the flow straightener and shower hose and fully turn on both hot and cold taps.



7. Check the orientation of the nut on the replacement diverter axle (see diagram). If it is the wrong way around pull it off and put it back on the other way around.



8. Remove the o-ring from the damaged diverter axle and use it on the replacement axle. TIP a paper clip will be useful to help slide the o-ring off the damaged diverter axle.

Insert the replacement diverter axle into position in the bath / shower mixer making sure the arm on the axle slots into the groove on the diverter mechanism.

Step 1.

Remove the shower hose attachment from the diverter valve on the bath / shower mixer.

Next remove the diverter handle. Do this by placing a flat head screwdriver into the base of the diverter valve on the underside of the spout (to stop it spinning whilst you unscrew the handle) [Figure 1]. Unscrew the diverter handle by turning anti-clockwise [Figure 2].



Figure 1



Figure 2

Step 2.

Using a 12mm Allen key unscrew the diverter valve by turning anti-clockwise [Figure 3]. For an alternate method without the 12mm Allen key see 'Alternate Step 2' below.



Figure 3

Alternate Step 2.

Using a 10mm spanner unscrew the diverter from the top of the spout, turning anti-clockwise [Figure 4].



Figure 4

Step 3.

Remove the diverter component from the underside of the spout [Figure 5]. Remove the flow straightener (using a suitable spanner) from the spout and flush out the bath shower mixer by turning on the hot and cold water to remove any debris which may be left behind from the damaged diverter component. Then proceed to fit the replacement component by reversing steps 2 and 1.



Figure 5

Replacement component:



In most cases it's unlikely the valve component has failed. If the basin mixer is being used in a hard water area it's likely a build-up of limescale or damaged O-rings have caused the basin mixer to drip.

Service valves on Bora basin mixer:

1. Shut off the water supply to the tap you are working on.
2. Unscrew the handle assembly by rotating the collar anti-clockwise.



3. Using a 17mm socket wrench or spanner loosen the valve by turning anti-clockwise. The valves can be tightly screwed in so take care not to damage the tap or basin.



4. Remove the valve and inspect the O-ring for damage. Clean it and the valve body. A wire brush maybe useful if a lot of limescale has built up on the valve. Also check the rubber seal on the base of the valve (colour coded for hot and cold). Clean this and make sure it has a flat surface.

AFTERCARE

Instructions for fixing drip issue on
Reef, Bora & Aero basin mixers



6. Using tap grease (available from plumbers merchants) grease the O-rings and threads before re-installing the valves.
7. Re-fit the handles, turn the water supply back on and test the tap.