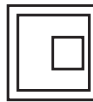


1170MM WALL HUNG FRAME AND CISTERN TR9006

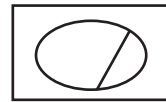
No.	Description	Product Code	Fixings included
1	1170mm Wall Hung Frame and Cistern	TR9006	YES



- 1170mm height
- adjustable legs
- 6/3 litre pneumatic flush valve
- side entry 1/2" male inlet valve
- front access for maintainance
- adjustable depth: 140-200mm (for side or floor exit pipe runs)
- 110mm min depth if pipe work routed straight through wall
- polystyrene anti-condensation jacket
- 0.2-10.0 bar working pressure range
- brackets, fixings and 1st fix protective covers included
- compatible with pneumatic flush plates & buttons (sold separately)



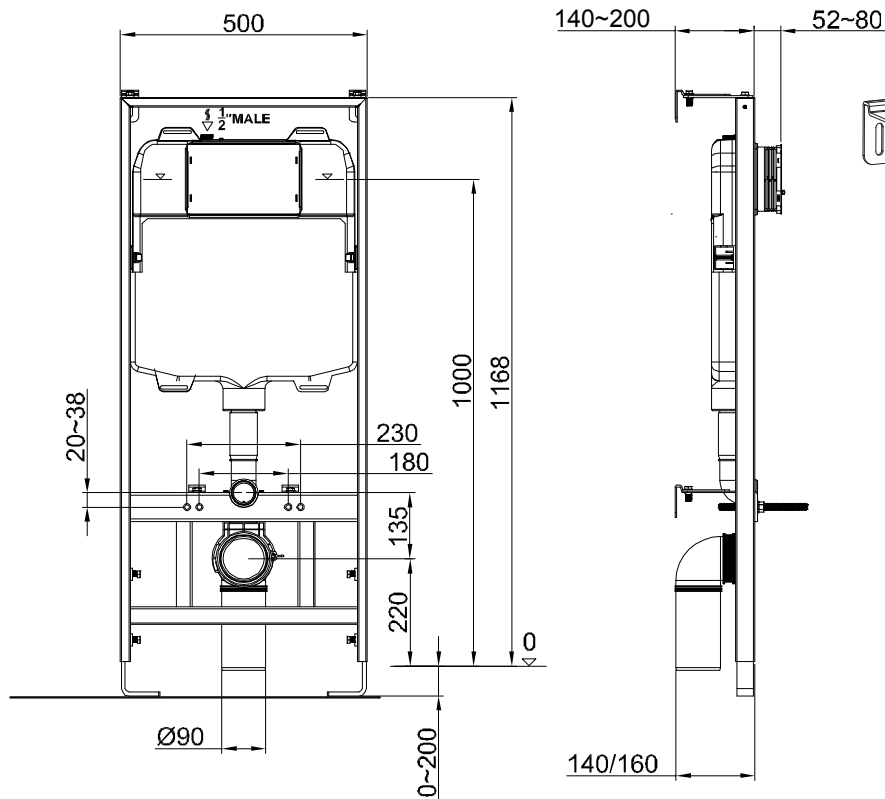
TR9003



TR9004

Note: If using TR9003, provisions must be made for maintenance access.

Dimensions:



DIAGRAMS NOT TO SCALE | ALL DIMENSIONS IN MM | TOLERANCE OF ± 5MM

FAQs

What is the flush volume of the cistern? - The cistern has a full flush of 6 litres and a half flush of 3 litres.

Is the frame supplied with a flush plate? - No, this is purchased separately - Ellipse flush plate (TR9004)

Can the flush plate be mounted on top? - No, the flush plate can only be mounted on the front of the cistern.

Can the waste pipe be routed out to the side of the frame? - Yes, with a minimum distance of 170mm from wall to the front of the frame.

What height will my pan be? - If the frame is set at 1170mm the pan should be approximately 410mm above the floor, though this will depend on the pan used.