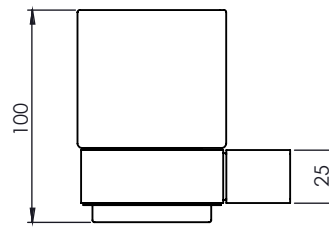
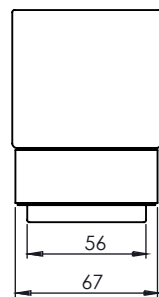
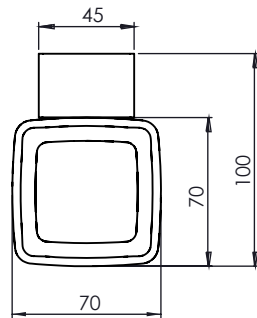


Technical Data Sheet

TOOTH BRUSH HOLDER (FROSTED)

Whats in the box: 1x 7816.02 & Fixings

ROPER RHODES®



Diagrams not to scale
All dimensions in mm
tolerance of +/-5mm

Materials

Frame: Chrome plated brass

Cup: Frosted glass

**Dimensions are subject to change, customers are advised to measure actual product before commencing installation.

***Fixing point dimensions are for guidance only/the positions of wall fixing must be checked when product is received.

FAQs

- | | |
|--|----------------|
| Q: What is the overall distance from the wall? | A: 100 mm |
| Q: Coverplate dimensions? | A: 25mm x 45mm |
| Q: Fixing point centres? | A: 25 mm |
| Q: How thick is the glass? | A: 4mm |
| Q: Is it safety glass? | A: Yes |