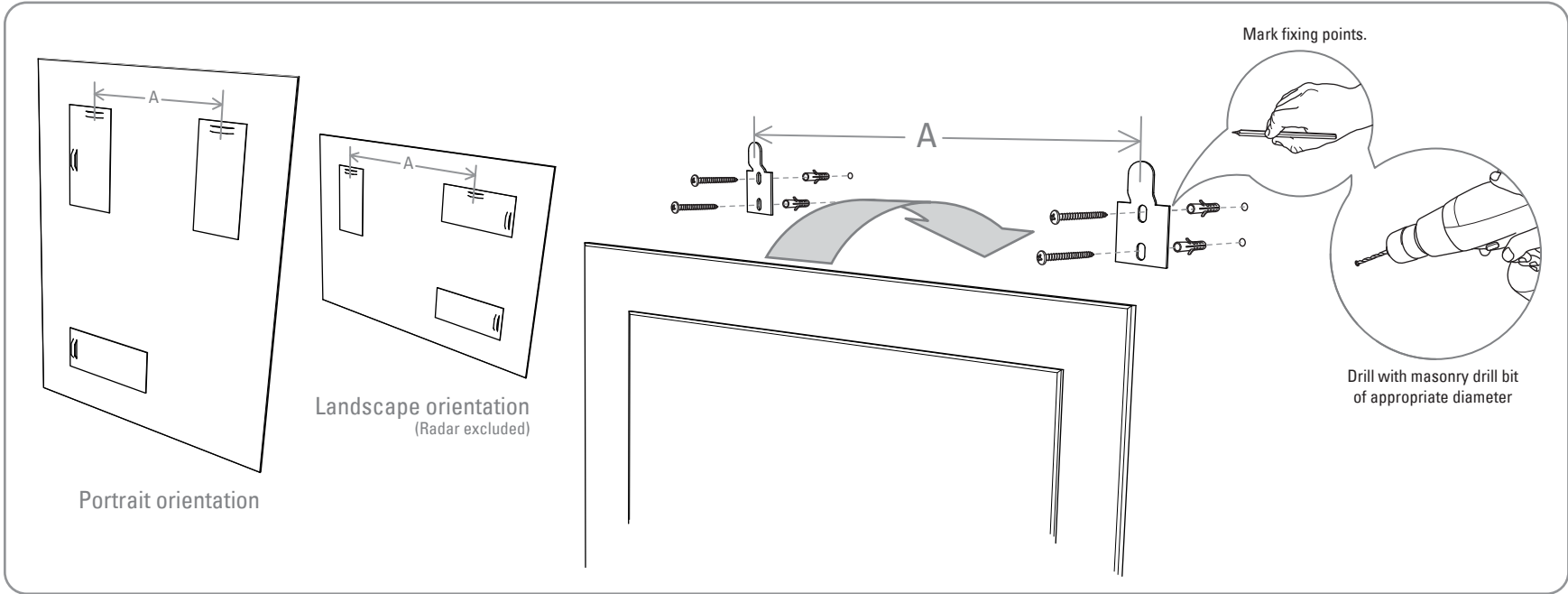
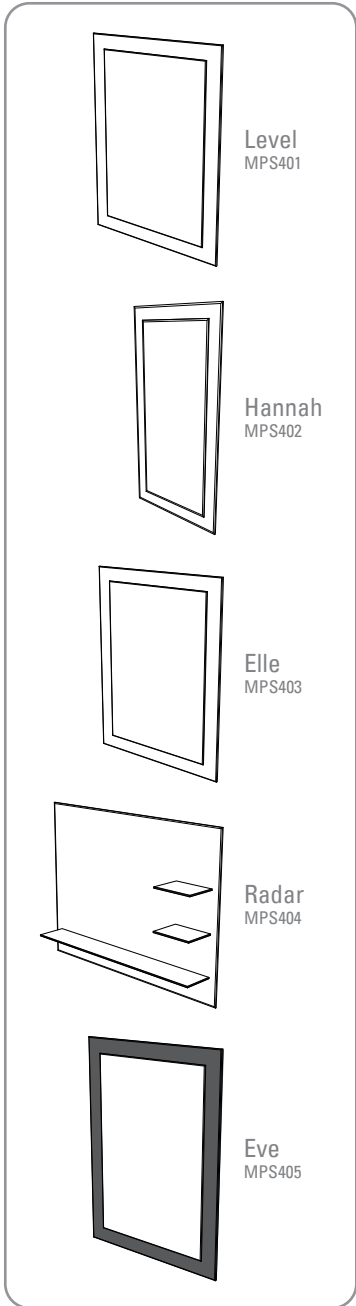


Installation Instructions for Level, Hannah, Eden, Radar & Eve Mirrors

Please read carefully before you start and retain for future reference



REMEMBER

Wear suitable eye protection when drilling. Take care when using power tools near water - the use of a residual current device (RCD) is advised. Beware of hidden cables or pipes. When drilling tiled surfaces, a piece of masking tape applied to the wall before marking out the fixing holes will stop the drill wandering.

WARNING

This product uses safety film backed glass. This product should not be fitted directly above a bath or in a shower cubicle. Glass thickness is 5mm. Do not strike glass with hard or pointed items. Do not place very hot or very cold items against or in close proximity to glass surfaces unless an adequately thick insulation material is used to prevent such items coming in contact with the glass. Pay particular attention to the shelf load warning labels on Radar. Overloading may result in damage to the mirror. For details on replacement components contact customer services at the address below.

This product could be dangerous. Installation is only to be carried out by a competent person.

CLEANING

Clean with a soft damp cloth or leather with washing up liquid or soft soap. Do not use abrasive cleaning agents such as powder cleaners.

PROCEDURE

Ensure the wall surface is of suitable strength and construction.

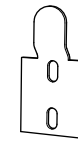
Note: Wall plugs provided are suitable for Stone or Brick walls. For other wall types use appropriate wall plugs. If in doubt consult an expert.

- 1) Choose desired hanging orientation of the mirror (All mirrors can be hung Landscape or Portrait except Radar Mirror). Mark the desired height of the mirror and draw a horizontal line on the wall (using a spirit level) which corresponds with the height of the hanging plates on the back of the mirror. Measure the distance between the centres of the metal plate loops on the back of the mirror. This is distance A. Mark off the distance A on the horizontal line, to determine where the centres of the wall brackets are positioned. Using the wall brackets as templates, mark off the hole positions. Then drill and fit the wall plugs and fit the two wall brackets using the 4 screws provided.
- 2) Peel the protective strip off the two foam spacer pads and stick them to the back of the mirror equidistant from the edges of the mirror towards the base.
- 3) Hang the mirror, checking that it is secure. Note: Retain any surplus parts for future use

PARTS INCLUDED



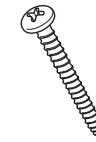
1x mirror



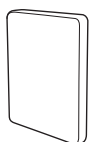
2x wall brackets



4x wall plugs



4x screws



2x foam spacer pads