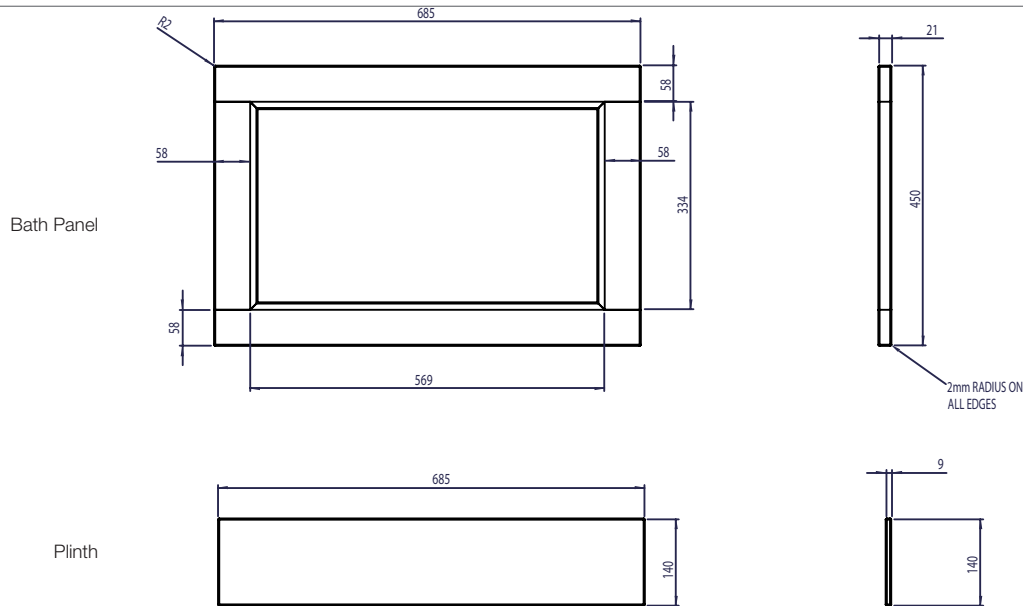


Technical Data Sheet

ROPER RHODES®

BP901.x Hampton 700 Bath End Panel & Plinth

Whats in the box: 1x BP901.x & Plinth



Diagrams not to scale
All dimensions in mm
tolerance of +/-5mm

Materials

Bath panels: 21mm Painted MDF & Solid Timber

Plinth: 9mm Painted MDF

**Dimensions are subject to change, customers are advised to measure actual product before commencing installation.

***Fixing point dimensions are for guidance only/the positions of wall fixing must be checked when product is received.

FAQs

Q: What are the front faces painted with?

A: Build up of 3 layers of UV cured Polyurethane (PU) paint.

Q: Are the back faces painted?

A: All faces are painted the same.

Q: Can the panel be used with a bath panel corner post?

A: Yes

Q: What is the height adjustable range?

A: 450 - 590mm

NOTE: No RAL Code available